

KEFA AIRLESS 8125
KEFA AIRLESS 8125/B - KEFA KOTE
BRUSH AND ROLL



Distributed by:

PAINT SUPPLY COMPANY

2528 W. Pembroke Avenue
Hampton, Virginia 23661

PHONE: 757-247-6651 • FAX: 757-247-7158
EMAIL: sales@paintsupplyco.com • WEB: www.paintsupplyco.com



Kefa Airless 8125 is a lightweight, water-based coating that has the ability to absorb water condensation and store it until the ambient conditions allow the water to evaporate back into the air.

KEY FACTORS:

- ONE COAT SYSTEM
- PREVENTS CONDENSATION
Absorbs up to one quart of water per ten square feet at 40 mils.
- ENVIRONMENTALLY FRIENDLY
Water based
80% volume solids
V.O.C., 0.167 lbs./gallon
- PERFORMS TO TT-C-492 SPECIFICATIONS
- CLASS 1 FIRE RATING / UNDER CONSIDERATION FOR MIL-PRF 24596 FIRE PROTECTIVE COATING
- EXCELLENT INSULATING PROPERTIES
- NOISE DAMPING



COATING PROPERTIES

- Insulates
- Absorbs condensation water
- Spreads water evenly in coat
- Transports water to surface
- Breaks surface tension
- Speeds up evaporation

Air can contain a lot of water

Volume 8.000 m³
Roof area ca 900 m²
Temp 20°C RH 70%
VC 12g1m³
Total 96 lit water

DRY TECHNOLOGY

What is KEFA Coating?

- A microporous coating
- Water based
- Harmless to health
- It works forever

If roof temperature goes down to 10°C, 20 litre of water can drip from the roof in a few minutes

Industries served:

U.S. Navy, Army and Coast Guard Vessels
Food Processing Plants
Meat/Poultry Processing Plants
Bulk Storage Facilities
Bulk Shipping Vessels
Duct Work Plenums
Railroad Industry

Any industry where condensation, mold, mildew and excessive moisture is detrimental to business and production.



KEFA Airless 8125 A COATING FOR THE 21ST CENTURY



KEFA Mould Protection



Mould Combating

First defence line

Get rid of moisture
Ventilation, dehumidification

Second defence line

Chose mould resistant material

Half capitulation

Sanitizers
Environment problem



Norwegian bakery.

Conventional antimould paint 2 months

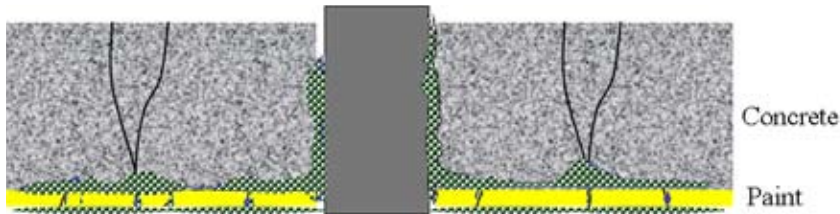


Norwegian bakery.

KEFA after 2 years

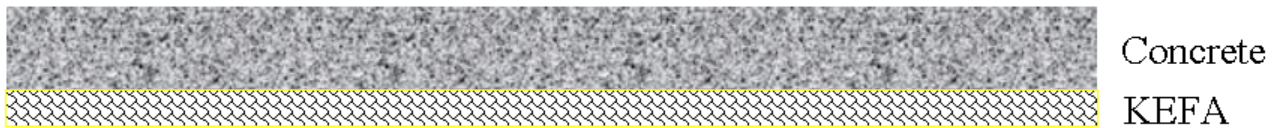


**Conventional antimould paint
after several repaints**



Vapour pressure in premises is normally higher than in walls and roof ; Vapour penetrates pores and cracks and condenses behind the paint

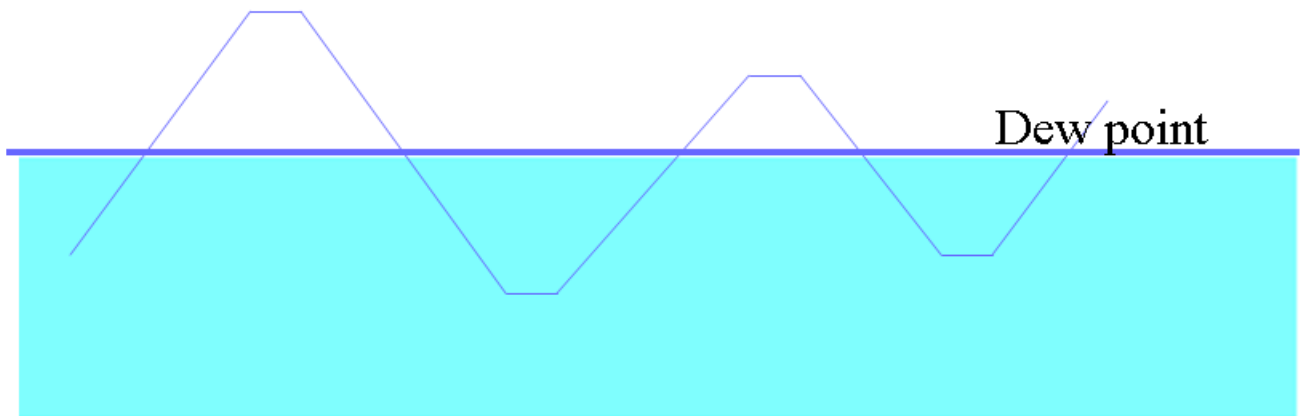
KEFA surface stays dry



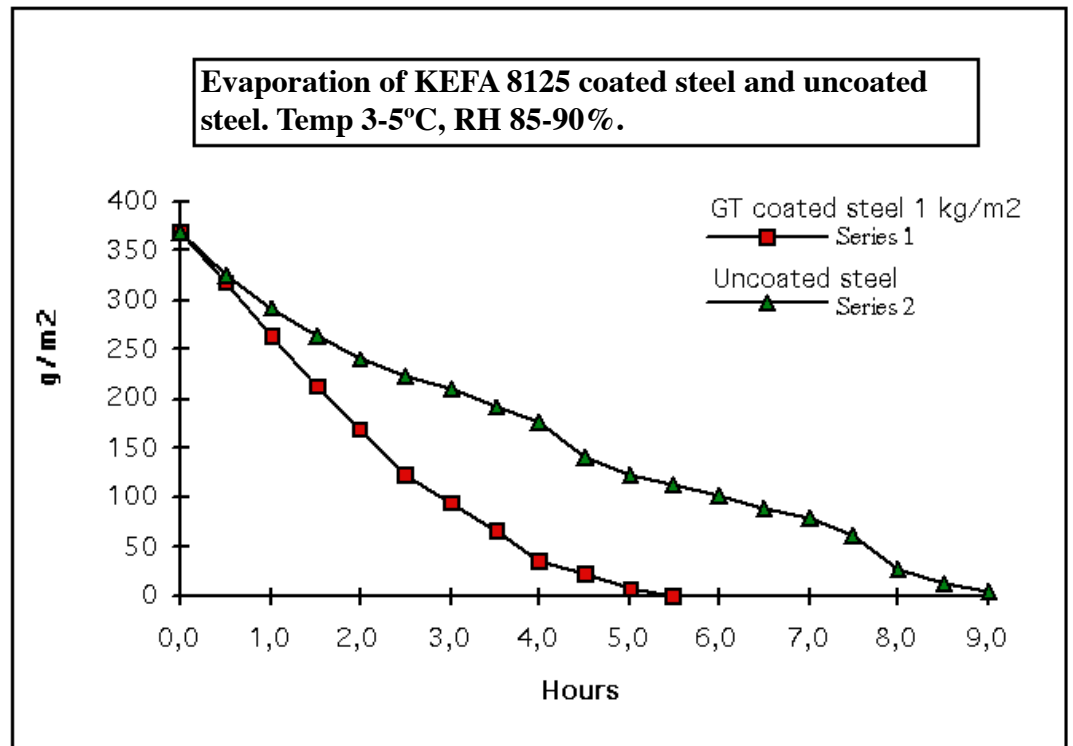
- At dew point no water film is formed
- Below dew point condensation forms under KEFA coat.
- KEFA surface stays dry
- KEFA absorbs the water. No free water
- Water evaporates fast
- Limited conditions for mould growth



KEFA Coating requires a cyclic condensation process with dry periods between condensation periods



**KEFA Coating
Speeds up
evaporation**





KEFA was developed in co-operation with

Texas A&M University, USA

The University of Arkansas, USA

University of Louisiana, USA

Princess Risborough University, UK



PAINTING SPECIFICATION

Customer: Various

Object: Ship, boat, etc.

Area: Any area subject to condensation

SURFACE PREPARATION

Oil, grease, etc. to be removed by emulsion cleaning. Salt and other water-soluble contaminants to be removed by high-pressure fresh water hosing. When the surface is dry, clean damaged, rusted, or otherwise corroded areas thoroughly by abrasive blasting or power tool cleaning. Feather edges to sound, intact paint, dust off residues, and touch up to full film thickness.

SYSTEM INFORMATION

	W.F.T.	D.F.T.	SPR. rate
F/C MIL-DTL-24441 F-150/MIL-PRF-23236 TY IV or TY V	See data sheet	See data sheet	See data sheet
F/C KEFA AIRLESS 8125	60	60	27

PRODUCT INFORMATION

Product no.	Curing agent	Volume solids %	V.O.C. lbs/gal.	Mixing ratio vol.	Potlife hrs. 68°F	Recom. thinner	Min. app. temp. °F	Max. R.H. %
Primer	See data sheet	See data sheet	See data sheet	See data sheet	See data sheet	See data sheet	See data sheet	See data sheet
8125	N/A	100%	0.17	N/A	N/A	N/A	41	80

RECOATING INTERVALS

Product no.	104°F		86°F		68°F		59°F		41°F	
	Min.	Max.	Min.	Max.	Min.	Max.	Min.	Max.	Min.	Max.
Primer	See data sheet		See data sheet		See data sheet		See data sheet		See data sheet	
8125	2 hrs.	None	4 hrs.	None	8 hrs.	None	12 hrs.	None	16 hrs.	None

Date of issue: September 2006





REMARKS

Please consult respective Product Data Sheets and Application Instructions for further product information. The spreading rate given on the front page is theoretical and given in sq. ft / US gallon.

The surface must be completely clean and dry with a temperature at least 5°F above the dew point to avoid condensation.

The specified dry film thickness may best be obtained by airless spray application. If another application method is used, more applications may be necessary to achieve such thickness.

Stripe coating to be carried out on areas difficult to cover properly as e.g. edges, corners, flanges, and other rough surfaces.

Before recoating after exposure to contaminated environments, clean the surface thoroughly by high-pressure fresh water hosing and allow to dry.

For further information about KEFA AIRLESS 8125, please contact Paint Supply Co. at 757-247-6651.



PRODUCT DATA KEFA AIRLESS 8125 and 8125B

DESCRIPTION KEFA AIRLESS 8125 is a water-based, moisture-absorbing coating. It is a light material with high water absorbing capacity. A 40 mils thick film holds approximately 1 quart/.25 US gallons of water per ten square feet (10 sq. ft).

Recommended use: As a finishing coat where water condensation/mold/mildew are a problem.

Availability: Subject to availability. Call a KEFA representative.

PHYSICAL CONSTANTS:

Color/Shade No.: White/10000
Finish: Flat
Volume solids: 80%
Theoretical spreading rate: See Remarks overleaf
Flash point: 57°C/135°F
Specific gravity: 1.0 kg/liter
8.3 lbs./US gallon
Dry to touch: 1 hour (approx.) at 20°C/68°F
Through dry: 8 hours (approx.) at 20°C/68°F
Shelf life: 5 years from date of production
V.O.C.: 20 g/liter- 0.167 lbs./US gallon
According to US EPA Method 24

APPLICATION DETAILS:

Application method: Airless spray Brush (touch-up only), roller / 8125B brush and roll use
Thinner (max. vol.): None None
Consult separate APPLICATION INSTRUCTIONS
Nozzle orifice: .025" (approx.)
Consult separate APPLICATION INSTRUCTIONS
Nozzle pressure: 50 psi (approx.)
Consult separate APPLICATION INSTRUCTIONS
Cleaning of tools: Fresh water
Indicated film thickness, dry: 60 mils (*See REMARKS overleaf*)
Indicated film thickness, wet: 60 mils (*See REMARKS overleaf*)
Recoat interval, mm: 8 hours (20°C/68°F)
Recoat interval, max: None (*See REMARKS overleaf*)

Safety: Handle with care. Before and during use, observe all safety labels on packaging and paint containers, consult Material Safety Data Sheets and follow all local or national safety regulations. Avoid inhalation, avoid contact with skin and eyes, and do not swallow. Take precautions against possible risks of fire or explosions as well as Protection of the environment. Apply only in well ventilated areas.



SURFACE PREPARATION:	Preceding coats should be sound and tightly adhering. Remove any oil and grease with suitable detergent. Remove salts and other contaminants by high-pressure fresh water cleaning. Remove rust and loose material by abrasive blasting or power tool cleaning. Dust off residues, and touch-up to full film thickness.
APPLICATION CONDITIONS:	Apply only on a dry and clean surface with a temperature above the dew point to avoid condensation. Ambient temperature minimum 5°C/41°F, preferably above 10°C/50°F. Relative humidity below 80%, preferably between 40-60%. Good ventilation during application and drying is necessary (<i>See REMARKS below</i>).
PRIMERS:	According to specification. On steel and other metals, it is important that a suitable anticorrosive system is applied - being resistant to conditions of service resembling frequent/heavy condensation. (<i>Refer to primer recommendation sheet</i>)
SUBSEQUENT COAT:	Must not be overcoated with other materials.
REMARKS:	
Service temp:	Dry service temperature: 79°C/175°F. Dry peak temperature: 100°C/212°F, yet related to the preceding coats.
Volume solids:	This material is very porous by nature. The indicated 80% volume solids has been determined as the ratio between dry and wet film thickness at specific application conditions where no paint loss is encountered. The theoretical solids by volume is 50% based on the formula of composition without correction for porosities.
Film thicknesses:	May be specified in another film thickness than indicated. Normal range is 40-80 mils dry film thickness. This will alter spreading rate and may influence drying time. If applied in higher film thicknesses, for instance areas later on to be exposed to heavy condensation, a special procedure is recommended: apply approx. 40 mils and let it dry for 8 hours (20°C/68°F) under strong ventilation. Then apply the rest of the coat - if necessary by using a "wet-on-wet" technique of application. Consult separate APPLICATION INSTRUCTIONS.
Ventilation:	Under humid conditions, ample ventilation with dry air (40-60% RH) is required to remove water vapors in the drying phase. It is of utmost importance that sufficient ventilation is covering all parts of the surfaces painted. Ventilation requirement to remove water vapor liberated during application and drying is: - At 10°C/50°F: Approx. 20,000 cu. ft/US gallon of paint - At 20°C/68°F: Approx. 10,000 cu. ft/US gallon of paint on condition that the relative humidity of the air supply is 50% and raised to 100% during ventilation. Note that higher film thicknesses will mean need for a stronger ventilation during a longer period.
Theoretical spreading rate:	20 mils dft - approx. 65 sq. ft/US gallon 40 mils dft - approx. 33 sq. ft/US gallon 60 mils dft - approx. 22 sq. ft/US gallon 100 mils dft- approx. 13 sq. ft/US gallon
Shelf life/storage:	Store at temperatures between 5°C/41°F-40°C/104°F. Shelf life is reduced at temperatures above 86°F. Do not expose to frost during storage and transport or before the coating is dry.
Cleaning of tools:	Clean tools carefully with fresh water or lukewarm soap water immediately after use.
NOTE:	KEFA AIRLESS 8125 is for professional use only.
ISSUED:	September 2006



PRODUCT DATA APPLICATION INSTRUCTIONS

For product description refer to the product data sheet

KEFA AIRLESS 8125

Application Equipment:

Pneumatic Spray:	Use an intermediate pressure pump which is able to handle high viscosity products.
Pump:	Graco President 10:1 Model 978-429, 225-886 or equal
Gun:	Graco Model 204-000 or equal
Nozzle:	0.24 - 0.26"
Hose:	3/4" material hose and 3/8" hose
Pump input pressure:	2 bar/28/5 psi
Atomizing pressure:	3.5 bar/50 psi
Airless Spray:	Use a siphon feed pump or a gravity feed pump, with all filters and strainers removed such as: GracoF Ultra 1500, Graco 1000 (Encapsulator) Powertwin 5500, Speeflo Hydra M2000, H.E.R.O. Model 110
Pump:	Graco Silver Gun or equal
Gun:	0.029 - 0.051"
Nozzle:	3/8" - 1/2" hose
Hose:	
Funnel Shaped Spray:	Use a Goldblat, or equal, acoustic hopper spray, funnel-shaped container.
Brush/Roller:	Use a long-haired, soft brush or a 3/8" nap roller. Apply the first layer thinly and build to the proper thickness in the second or if necessary the third layer. Let each layer dry to touch before proceeding.

CRATERS:

Craters may occur--e.g. If mixing has been improperly done, if solid particles occur due to improperly cleaned equipment or if wrong spraying distance is used. Any problem of cratering is aggravated when film thickness is raised, especially when applying "wet-in-wet".

MIXING:

Because of the consistency and composition of 8125, it is always necessary to thoroughly mix before use. For proper mixing, we recommend allowing one hour prior to spraying. We advocate using a 1/2" variable speed drill with a paddle mixer. Stir the product at 250-500RPM for 10 minutes minimum and allow to stand for 15 minutes before application. If available, best results may be achieved using Gyromixer for 3-6 minutes. NEVER use a shaker mixer.

Thinning is not necessary nor recommended, as the product is supplied ready for use. Heating the material to 35°C or 97°F just prior to application with an inline or pot heater is recommended.

CLEANING OF EQUIPMENT:

Spraying equipment must be free from oil, solvents, etc. before use. It is recommended that the equipment is cleaned as follows:

Prior to use:	Clean thoroughly with plenty of fresh water.
After use:	Clean thoroughly with plenty of fresh water. Whenever the compound is wet, it promotes rust, so any equipment, especially the pump, should be oiled after use. Do not forget to remove this before the next use. It is also recommended for the preservation of the pipes and hoses that they be filled with mineral spirits during storage.

SURFACE PREPARATION:

Preceding coats should be sound and tightly adhering. Remove any oil and grease with suitable detergent. Remove salts and other contaminants by high pressure fresh water cleaning. Remove rust and loose material by abrasive blasting or power tool cleaning. Dust off residues.

APPLICATION CONDITIONS:

Apply on a clean and dry surface with a temperature at least 25°C/5°F above the dew point to avoid condensation. Ambient temperature minimum 5°C/41°F, preferably above 10°C/50°F. Relative humidity below 80%, preferably between 40% - 60%. Good ventilation during application and drying is necessary. (See REMARKS below)



PRECEDING COAT:

According to specification. On steel and other metals it is important that a suitable non-zinc anti-corrosive system is applied--being resistant to conditions of service resembling frequent heavy condensation.

SUBSEQUENT COATS:

Must not be over coated with other materials.

REMARKS:
Climates:

Climate may contribute to conditions that will produce condensation. Measurements of surface temperature, air temperature, and relative humidity are essential to determine the dew point. In cold climates radiant heating of surfaces to be coated may be required where thermal transmission of cold to the surface is a factor. In hot or humid climates desiccated (dry) heated air to the space may be required.

Ventilation:

Under humid conditions ample ventilation with dry air (40 - 60% RH) is required to remove water vapors in the drying phase. It is of utmost importance that sufficient ventilation is covering all parts of the surface painted. Ventilation requirements to remove the water vapor during application and drying is:

- At 10°C/50°F: Approx. 150 m³/litre (20,000 cuft/US gallon) of paint
- At 20°C/68°F: Approx. 75 m³/litre (10,000 cuft/US gallon) of paint

on condition that the relative humidity of the air supply is 50% and raised to 100% during ventilation. Note that higher film thickness will mean need for a stronger ventilation during a longer period

Theoretical Spreading Rate:

Approximately 33 sqft. per gallon @ 40 mils.

Shelf Life Storage:

Store at temperatures between 5-40°C/41-104°F. Do not expose to freezing during storage and transport or before the coating is dry. Avoid outdoor storage where packages can be exposed to direct sunlight. Do not exceed the maximum shaded outdoor storage temperature of 100°F.

Service Temperature:

Dry service temperature - 40°C/-40°F to 80°C/175°F.
Dry peak temperature - 100°C/212°F, yet related to the preceding coats.

V.O.C.

The Volatile Organic Compounds are 20 gr/litre, .167 lbs/US gallon

Note:

KEFA Airless 8125 for professional use only.

Safety:

Packings are provided with applicable safety labels which should be observed. In addition, national or local safety regulations should be followed. As a general rule, inhalation of solvent vapors or paint mist and contact of liquid paint with skin and eyes should be avoided. Forced ventilation should be provided when applying paint in a confined space or stagnant air. Even when ventilation is provided, respiratory, skin, and eye protection are always recommended when spraying paint. (Refer to Product Material Safety Data Sheet).

Issued:

September 2006 – KEFA (USA) INC.

This Product Data Sheet supersedes those previously issued. For definition and scope, see “Explanatory Notes” to the Product Data Sheets. Data, specifications, directions, and recommendations given in this data sheet represent only test results or experience obtained under controlled or specially defined circumstances. Their accuracy, completeness, or appropriateness under the actual conditions of any intended use of the products herein must be determined exclusively by the Buyer and/or User. The products are supplied and all technical assistance is given subject to KEFA’s GENERAL CONDITIONS OF SALES, DELIVERY, AND SERVICE unless otherwise expressly agreed in writing. The Manufacturer and Seller disclaim, and Buyer and/or User waive all claims involving any liability, including but not limited to negligence, except as expressed in said GENERAL CONDITIONS for all results, injury, or direct or consequential losses or damages arising from the use of the products as recommended above, on the overleaf, or otherwise. Product data are subject to change without notice and become void five years from the date of issue.



Recommended Primers for Kefa Airless 8125 and 8125B Kefa Kote

Navy/Marine Use:

MIL-DTL-24444 1- F150 TY-III or TY-IV

MIL-PRF-23236- TY IV or TY V

TT-P-645B YELLOW/WHITE

Light Commercial/Industrial Use:

Ferrous Metal

Concrete/Masonry

CMU

New Aluminum

Weathered Aluminum

New Galvanized

Weathered Galvanized

Rust Inhibitive primer

Acrylic Primer / None Required

Acrylic Block Filler

TT-P-645B / Wash Primer/Prep Wash

DTM Acrylic Primer

See New Aluminum / None Required

DTM Acrylic Primer/ Epoxy Primer

See New Galvanized / None Required

Heavy Commercial/Industrial

Ferrous Metal

Concrete/Masonry

CMU

New Aluminum

Weathered Aluminum

New Galvanized

Weathered Galvanized

Rust Inhibitive Epoxy Primer

Acrylic Primer / None Required

Acrylic Block Filler

TT-P-64445B / Wash Primer

See New Aluminum / None Required

DTM Acrylic Primer / Epoxy Primer

DTM AcryliciProxy / None Required

**FOR ADDITIONAL INFORMATION CONTACT YOUR KEFA
REPRESENTATIVE OR CALL PAINT SUPPLY COMPANY AT
757-247-6651**





Material Safety Data Sheet

Section 1. Chemical Product and Company Identification

Trade Name	KEFA AIRLESS 8125 and 8125B KEFA KOTE
Supplier	Paint Supply Co. 2528 W. Pembroke Ave. Hampton, VA 23661
Common Name	KEFA Airless 8125 Brush/Roll: KEFA 8125B/KEFA Kote
Mixing Ratio	Ready to use
Chemical Family	One Component Product Water based paint (Paint)
Material Uses	Coatings: Anti condensation paint Industrial applications: Anti condensation paint Other non-specified industry: An anti-condensation microporous material designed to quickly absorb and desorb moisture into the air for quick drying.
Manufacturer	Distributed by / manufactured for: Paint Supply Co. 2528 W. Pembroke Ave., Hampton, VA 23661

Section 2. Hazardous Ingredients

Name	CAS #	% by Weight	Exposure Limits
No hazardous ingredient			

Section 3. Hazards Identification

Physical State & Appearance	Liquid. (Heavy liquid)
Emergency Overview	CAUTION! May be harmful if swallowed. Contact with eyes may cause discomfort. Repeated contact with skin may cause irritation or allergic skin reaction. Avoid exposure during pregnancy. After handling, always wash hands thoroughly with soap and water. Do not ingest.
Routes of Entry	Absorbed through skin. Eye contact. Inhalation.
Potential Acute Health Effects	EYES – Slightly hazardous in case of eye contact (irritant). SKIN – Sensitation of the product: Not available. Slightly hazardous in case of skin contact (irritant). Skin inflammation is characterized by itching, scaling, reddening, or occasionally, blistering. INHALATION – Slightly hazardous in cause of inhalation. INGESTION – Not available.
Potential Chronic Health Effects	CARCINOGENIC EFFECTS: Classified None by NIOSH (ethanol). Classified A4 (not classifiable for human or animal) by ACGIH (ethanol). Classified None by NIOSH (dipropylene glycol methyl ether). MUTAGENIC EFFECTS: Not Available. TERATOGENIC EFFECTS: Not Available.
Medical Condition Aggravated by Overexposure	Repeated or prolonged exposure is not known to aggravate medical condition
Overexposure / Signs / Symptoms	Not available.



Section 4. First Aid Measures

Eye Contact	Check for and remove any contact lenses. In case of contact, immediately flush eyes with plenty of water for at least 15 minutes. Cold water may be used. Get medical attention if irritation occurs.
Skin Contact	Wash with soap and water. Cover the irritated skin with an emollient. Get medical attention if irritation develops. Cold water may be used.
Inhalation	If inhaled, remove to fresh air. If not breathing, give artificial respiration. If breathing is difficult, give oxygen. Get medical attention if symptoms appear.
Ingestion	Do NOT induce vomiting unless directed to do so by medical personnel. Never give anything by mouth to an unconscious person. If large quantities of this material are swallowed, call a physician immediately. Loosen tight clothing such as a collar, tie, belt or waistband.

Section Fire Fighting Measures

Flammability of the Product	Non-flammable
Auto-ignition Temperature	Not applicable
Flash Points	Not applicable
Flammable Limits	Not applicable
Products of Combustion	Not applicable
Fire Hazards in Presence of Various Substances	Not applicable
Explosion Hazards in Presence of Various Substances	Risks of explosion of the product in presence of mechanical impact: Not available Risks of explosion of the product in presence of static discharge. Not available
Fire Fighting Media and Instructions	Aqueous solutions are non-flammable
Protective Clothing (Fire)	Not applicable
Special Remarks on Fire Hazards	Not available
Special Remarks on Explosion Hazards	Not available

Section 6. Accidental Release Measures

Small Spill and Leak	Dilute with water and mop up, or absorb with an inert dry material and place in an appropriate waste disposal container. Finish cleaning by spreading water on the contaminated surface and dispose of according to local and regional authority requirements.
Large Spill and Leak	Finish cleaning by spreading water on the contaminated surface and allow to evacuate through the sanitary system.

Section 7. Handling and Storage

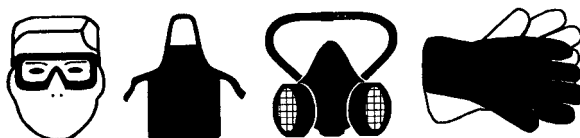
Handling	Avoid breathing vapors or spray mists.
Storage	Keep container tightly closed. Keep container in a cool, well-ventilated area. Do not store below 0°C (32°F).



Section 8. Exposure Controls / Personal Protection

Engineering Controls	Provide exhaust ventilation or other engineering controls to keep the airborne concentrations of vapors below their respective occupational exposure limits.	
Personal Protection	EYES	Splash goggles
	BODY	Synthetic apron
	RESPIRATORY	Vapor respirator. Be sure to use an approved/certified respirator or equivalent.
	HANDS	Impervious gloves
	FEET	Not applicable

Protective Clothing (Pictograms)



Personal Protection in Case of a Large Spill Splash goggles. Full suit. Vapor respirator. Boots. Gloves. A self-contained breathing apparatus a Large Spill should be used to avoid inhalation of the product. Suggested protective clothing might not be sufficient; consult a specialist BEFORE handling this product.

Product Name Exposure Limits
 No hazardous ingredients.

Consult local authorities for acceptable exposure limits.

Section 9. Physical and Chemical Properties

Physical State and Appearance	Liquid. (Heavy liquid)	Odor	Characteristic. Latex like.
Molecular Weight	Not applicable.	Taste	Not available.
Molecular Formula	Not applicable.	Color	White 10000
pH (1% Soln/Water)	8 [Basic.]		
Boiling/Condensation Point	100°C (212°F)		
Melting/Freezing Point	May start to solidify at -0.1°C (31.8°F) based on data for: water.		
Critical Temperature	Not available.		
Specific Gravity	1 (Water = 1)		
Vapor Pressure	Not available.		
Vapor Density	>1 (Air = 1)		
Volatility	20% (v/v). 68% (w/w)		
Odor Threshold	Not available.		
Evaporation Rate	>1 compared to Butyl acetate.		
VOC	20 (g/l).		
Viscosity	Not available.		
LogK _{ow}	The product is more soluble in water.		
Ionicity (in Water)	Not available.		
Dispersion Properties	See solubility in water, methanol, diethyl ether, n-octanol, acetone.		



Solubility Easily soluble in methanol, diethyl ether.
Soluble in cold water, hot water.
Partially soluble in n-octanol, acetone.

Physical Chemical Comments Not available.

Section 10. Stability and Reactivity

Stability and Reactivity The product is stable.

Conditions of Instability Not available.

Incompatibility with Various Substances. Not available.

Hazardous Decomposition Products Not available.

Hazardous Polymerization Will not occur.

Section 11. Toxicological Information

Toxicity to Animals LD50: Not available.
LC50: Not available.

Chronic Effects on Humans CARCINOGENIC EFFECTS: Classified None. by NIOSH [ethanol]. Classified A4 (Not classifiable for human or animal.) by ACGIH [ethanol]. Classified None. by NIOSH [dipropylene glycol methyl ether].
DEVELOPMENTAL TOXICITY: Classified Reprod uctive system/toxin/female, Reprod uctive system/toxin/male [SUSPECTED] [ethanol].
May cause damage to the following organs: upper respiratory tract, skin, eyes.

Other Toxic Effects on Humans Slightly hazardous in case of skin contact (irritant), of eye contact (irritant), of inhalation.

Special Remarks on Toxicity to Animals Not available.

Special Remarks on Chronic Effects on Humans Not available.

Special Remarks on Other Toxic Effects on Humans Ingestion of high volumes during pregnancy can result in effects to the fetus and possible birth defects. (ethanol)

Section 12. Ecological Information

Ecotoxicity Not available.

BODS and COD Not available.

Biodegradable/OECD Not available.

Mobility Not available.

Toxicity of the Products of Biodegradation The product itself and its products of degradation are not toxic.

Special Remarks on the Products of Biodegradation Not available.



WHMIS (Canada)	Not controlled under WHMIS (Canada). CEPA DSL: unless otherwise noted, all ingredients listed.
EINECS	Not available.
DSCL (EEC)	This product is not classified according to the EU regulations.
International Lists	Australia (NICNAS): water; ethanol; dipropylene glycol methyl ether; propylene glycol methyl ether; alkylbenzenes C9-C10; 2-octyl-4-isothiazolin-3-one; 5-TRIAZINE, 2-(TERT-BUTYLAMINO)-4-(ETHYLAMINO)-6-(METHYLTHIO)-; ETHANOL, 2-BUTOXY-, PHOSPHATE (3:1) Germany water class: ethanol; dipropylene glycol methyl ether; propylene glycol methyl ether; 5-chloro-2-methyl-4-isothiazolin-3-one and 2-methyl-4-isothiazolin-3-one in mixture 3:1; S-TRIAZINE, 2-(TERT-BUTYLAMINO)-4-(ETHYLAMINO)-6-(METHYLTHIO)- Japan (MITI): water; ethanol; dipropylene glycol methyl ether; propylene glycol methyl ether; 2-octyl-4-isothiazolin-3-one; ETHANOL, 2-BUTOXY-, PHOSPHATE (3:1) Korea (TCCL): water; ethanol; dipropylene glycol methyl ether; propylene glycol methyl ether; alkylbenzenes C9-C10; 5-chloro-2-methyl-4-isothiazolin-3-one and 2-methyl-4-isothiazolin-3-one in mixture 3:1; 2-octyl-4-isothiazolin-3-one; S-TRIAZINE, 2-(TERT-BUTYLAMINO)-4-(ETHYLAMINO)-6-(METHYLTHIO)-; ETHANOL, 2-BUTOXY-, PHOSPHATE (3:1) Philippines (RA6969): water; ethanol; dipropylene glycol methyl ether; propylene glycol methyl ether; alkylbenzenes C9-C10; 5-chloro-2-methyl-4-isothiazolin-3-one and 2-methyl-4-isothiazolin-3-one in mixture 3:1; 2-octyl-4-isothiazolin-3-one; ETHANOL, 2-BUTOXY-, PHOSPHATE (3:1)
State Regulations	Connecticut carcinogen reporting list.: ethanol Pennsylvania RTK: ethanol (generic environmental hazard); dipropylene glycol methyl ether (generic environmental hazard); propylene glycol methyl ether Florida: dipropylene glycol methyl ether; propylene glycol methyl ether Minnesota: dipropylene glycol methyl ether; propylene glycol methyl ether Massachusetts RTK: ethanol; dipropylene glycol methyl ether; propylene glycol methyl ether; S-TRIAZINE, 2-(TERT-BUTYLAMINO)-4-(ETHYLAMINO)-6-(METHYLTHIO)- New Jersey: ethanol; dipropylene glycol methyl ether; propylene glycol methyl ether California prop. 65: No products were found.
<u>Section 16. Other Information</u>	
Label requirements	May be harmful if swallowed. Contact with eyes may cause discomfort. Repeated contact with skin may cause irritation or allergic skin reaction.
Hazardous Material Information System (U.S.A.)	
References	Not available.
Other Special Considerations	Note: Consult Code of Federal Regulations, Title 29, Labor, Parts 1910 and 1915 concerning occupational safety and health standards and regulations, as well as any other applicable Federal, State and Local regulation on safe practices in coating operations.

For Transportation Emergencies, call CHEMTREC: (800) 424-9300. If outside USA/Canada, call: (703) 527-3887.

Notice to Reader

To the best of our knowledge, the information contained herein is accurate. However, neither the above named supplier nor ally of its subsidiaries assumes any liability whatsoever for the accuracy or completeness of information contained herein. Final.





- NOTES -



KEFA KOTE
A COATING FOR THE 21ST CENTURY
For Use by Contractors and Homeowners



KEFA
KOTE

Dramatically Reduces Condensation

**STOP MOLD AND MILDEW
BEFORE IT STARTS**

For application instructions and recommendations, call your KEFA representative.

